

The Estate Agent People Recommend



7 Farman Close,  
Woodley  
RG5 4XF

Price guide £795,000



Wentworth Estate Agents are delighted to offer this STUNNING EXTENDED FOUR BEDROOM ONE EN SUITE DETACHED BRYANT RICHMOND presented in superb order throughout with refitted bathrooms and 29ft x 19ft 'L' shaped kitchen/dining room. The property enjoys THREE RECEPTION ROOMS, 21ft master bedroom and a DETACHED DOUBLE GARAGE. To the rear is attractive private rear garden. Viewing is highly recommended.

Located in a traffic free position in this small close on the popular airfield development.

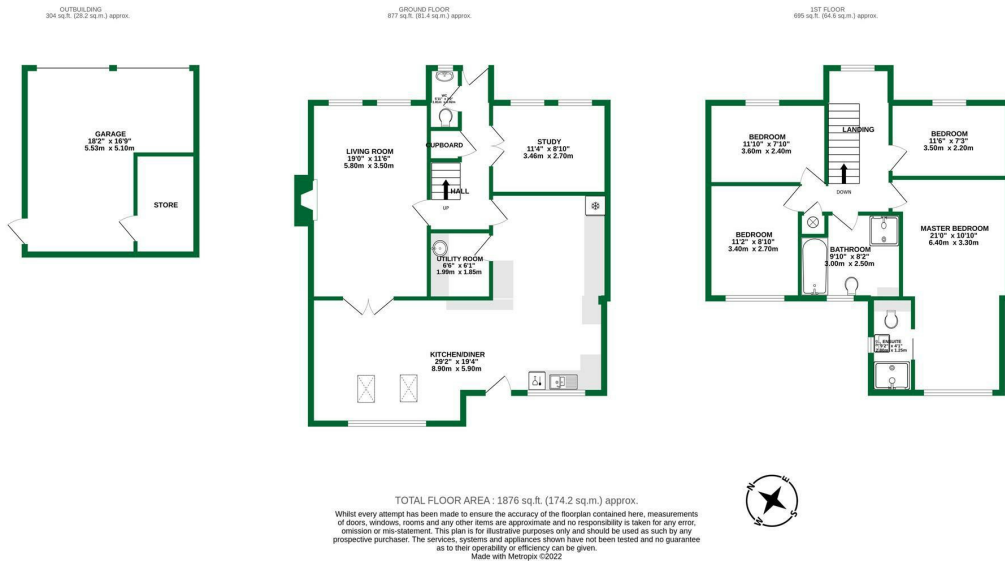
The property is within catchment for Woodley C of E primary School and Waingels Secondary School

Woodley centre has multiple shopping facilities including Waitrose and Lidl and a variety of cafes and restaurants.

M4 access is close by with Reading being about 3 miles away with its mainline station which is on the Crossrail Elizabeth line.

## ACCOMMODATION

- EXTENDED FOUR BEDROOM BRYANT RICHMOND
- RE FITTED EN SUITE AND FAMILY BATHROOM
- 21ft MASTER BEDROOM
- DETACHED DOUBLE GARAGE
- SUPERB 29" x 19" L'SHAPED KITCHEN/DINER
- 1876 SQUARE FEET
- PRIVATE REAR GARDEN
- TUCKED AWAY LOCATION



The Old Butchers, 15 High Street, Twyford, Berkshire, RG10 9AB  
t: 0118 934 0027 e: twyford@wentworthea.com

IMPORTANT: we would like to inform prospective purchasers that these sales particulars have been prepared as a general guide only. A detailed survey has not been carried out, nor the services, appliances and fittings tested. Room sizes should not be relied upon for furnishing purposes and are approximate. If floor plans are included, they are for guidance only and illustration purposes only and may not be to scale. If there are any important matters likely to affect your decision to buy, please contact us before viewing the property.



wentworth\_ea



wentworthestateagents

WentWorth  
Estate Agents

wentworthea.com